

Medical Devices

# IMPROVING HEALTHCARE TECHNOLOGY





# SOLUTIONS THAT MAKE HEALTHCARE WORK

We're Essentra, worldwide manufacturers and distributors of small, but vital components for multiple industries. We're proud of what we do and believe that even the smallest solutions have a big part to play in the Medical Device industry.

We work with the top 8 out of 10 of the world's biggest medical equipment manufacturers, providing the highest standards of service and quality. We work with over 70% of the world's top 100 global manufacturers.

We are a FTSE 250 company. While our reach is global with 12 manufacturing facilities, we have a local understanding. For you, that means our manufacturing capabilities, experience, customer focus, and global infrastructure allows us to leverage our extensive network to deliver bespoke solutions. We're able to bring together the best products, ideas and distribution for the Medical Device industry.

**"FROM CONCEPT TO PRODUCTION, ESSENTRA WAS ABLE TO SMOOTHLY MANAGE ALL PROJECT REQUIREMENTS TO COME UP WITH THE PERFECT SOLUTION."**

**"ESSENTRA WAS SO EASY TO DEAL WITH, PROVIDING SAMPLES AND 3D PROTOTYPES THROUGHOUT THE PROJECT."**

**Bob Siegwald,**  
Burgaflex Executive Vice President

WE WORK WITH  
**8 OUT OF 10**  
OF THE WORLD'S BIGGEST  
MEDICAL EQUIPMENT  
MANUFACTURERS

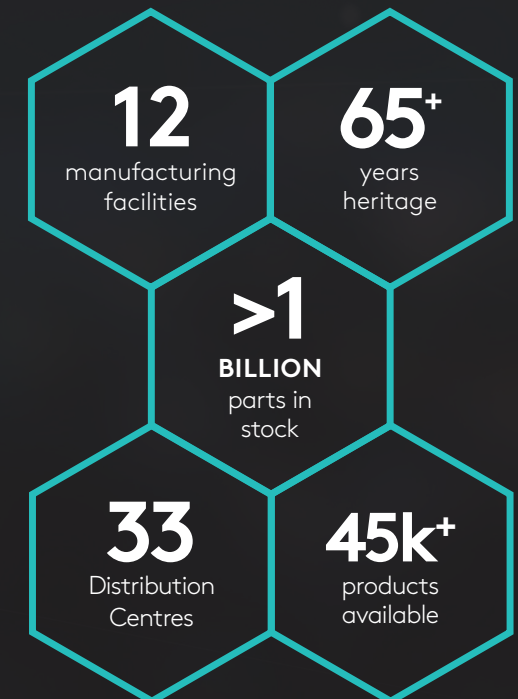
WE WORK TO HIGHEST  
INDUSTRY STANDARDS,  
WITH  
**ISO**  
ACCREDITATION

## GLOBAL REACH WITH A LOCAL TOUCH

Whether you have a global or local project, with over 65 years' experience, and worldwide coverage, we are here to help you.

## WHO IS ESSENTRA COMPONENTS?

We combine the expertise of a manufacturer with the range and service of a distributor. We act as the single-source supplier of c-class components to over 70 of the top 100 global manufacturers.





# SMALL PARTS WITH A BIG IMPACT

The rapid adoption of medical devices across hospitals and surgical centres is driving the global market. The current high growth is driven by the aging population, the rising prevalence of chronic disorders, the demand for preventive healthcare and the expansion of healthcare infrastructure, especially in emerging nations.

That's where we can help. Our technical and distribution expertise allows us to serve more than 3,000 manufacturers in at least 23 countries around the world and we are proud to supply \*8 of the top 10 Medical Devices companies globally.

No matter what stage your product is at, whether you're refining your design or prototyping, our expert advice, extensive range, consistent quality and custom solutions can make all the difference.

\* <https://www.proclinical.com/blogs/2019-5/the-top-10-medical-device-companies-2019>

## ACCESS SOLUTIONS

If you need a high-performance, ergonomic product, we can help with solutions sensitive to their environment and user needs while complying with international regulations.

### ADJUSTABLE TORQUE HINGES

Torque hinges have an adjustable holding torque with the aid of a setting key. The hinge articulates and holds a panel in position thus eliminating the need for a gas strut or lid stay.

### GASKET SEALS

Gasket seals offer protection from vibrations, ingress of humidity and dirt.

### CAM LOCKS

Cam locks are available with a variety of types, key rotation angle, and grip ranges.

## PLASTIC HOSE CLAMPS

### HOSE CLAMP QUICK ASSEMBLY

The range of plastic hose clamps offers a more cost efficient way of securing pipes and hoses. They are made of Nylon 6.6, come in a wide range of sizes and in 3 different colours; grey, white and black.

## FERRITES

### FERRITE SLEEVES

Ferrite sleeves are used as suppression cores for round cables and are available for a wide range of cable diameters. Installed around a cable, these A5 material cores, attenuate any form of EMI emission.

### NYLON CASE

The nylon case makes the assembly of the core halves a snap. Cores are easily installed in equipment where retrofit and test are a necessity. Impedance values are based upon a single turn measurement.

## HYGIENIC FEET, HANDLES, LOCKS AND NUTS

Easy to clean, chemically resistant, 3-A standard range of products are ideal for healthcare equipment manufacturing. This set of feet, handles and knobs all incorporate polished 304 stainless steel, silicone gaskets and smooth surfaces to reduce dust and dirt build up. Polished 304 stainless steel nuts prevent air, dust and liquid ingress by obscuring threads.

### 3-A HYGIENIC FEET

- Smooth polished surfaces minimises dirt and makes it faster and easier to clean
- 304 stainless steel more corrosion resistant and tougher than 303 stainless steel
- Silicone has good chemical and temperature resistance, important where steam cleaning is used above 120°C

### 3-A DOME NUT

These silicone cap nuts have an overall height of 12 mm and a thread size of M3.

### 3-A STAR KNOB

Silver M5 female thread knob has diameter with 6 lobes for excellent grip and comfort during adjustment.

### HYGIENIC COMPRESSION LOCK

Provides hygienic seal under vibrating conditions.

## MOTION CONTROL

5,000 new SKUs added including handwheels, knobs, levers, handles, control knobs, and indexing plungers. Alongside new PA, PP, POM and PF O-rings we also have steel, stainless steel and aluminium choices and customisable colour options to suit your build applications.

### ROTARY DAMPERS WITH GEAR

Rotary dampers with gear control the speed and acceleration of a movement in a travelling body. Simple to install, they can be fitted as part of an assembly. Available in a range of torques and gear profiles.

### ADJUSTABLE CLAMPING HANDLE

Ideal to make tightening adjustment and indexing. The handle design is appropriate for clamping and releasing with the press down button.

### LOCKING PIN

Locking pins are ideal for quick fixation between components in particular for applications with frequent adjustments.

### HANDWHEELS

Metal straight control hand wheels without Handles provide a leveraging hand hold even when the machine operator is wearing gloves. The durable metal construction provides added strength when adjusting and calibrating.

### INDEX PLUNGER

Used for locating, positioning. Index plungers allow for rapid adjustments on a variety of fixtures and tables such as medical equipment.

### BALL KNOBS - ROUND

Round ball knobs give a dressed-up look to a wide range of applications including machine tools, jigs, and fixtures. These smooth round knobs are available in a variety of materials, colours, and finishes suitable for displays or decorative uses.

### HINGED PULL HANDLE

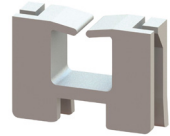
Made of aluminium the profile provides ergonomic features to hold and push large equipment safely.

### ALUMINIUM KNOB

Star knobs provides a firm and secure grip with quick adjustment. The simple design allows easy cleaning.

## CABLE MANAGEMENT

Manage, organise and protect complex cabling with easy-to-install solutions suited to a range of demanding and varied environments.



### WIRE SADDLE EDGE HOLDING

Great for applications where you require the wires to be close to the edge of the panel. Simply push the wires through the arms to hold in place.



### CABLE CLAMP

Adhesive mount adjustable cable Clamps have a ratcheting feature to hold and lock bundles securely. These clamps can be reopened for routing changes. Easily installed with the adhesive base.



### BALL CABLE TIES

Designed to allow easy application and release of the cable while preventing slipping.



### TWIST TIES

Twist ties are easy to use, simply place your cables into the open space and twist the two arms together to secure the fastening.



### HOOK & LOOP TIES

Material that can mate together easily. These Ties do not crush the cables being tied together. They are ideal for fragile cables.



### CABLE DUCT ADHESIVE

A versatile cable management product. With both adhesive and screw mounting options available there is added flexibility in the application.



### SPLIT HARNESS WRAP

The easiest and quickest way to wrap cables. also allows for breakout of cables and provides abrasion protection.

## FASTENERS

Ensure the quality and life of your product with fasteners in the sizes and tolerances you need, designed to work for just about every application.



### PUSH RIVETS

- Fast, economical, permanent
- Rivet expands for secure tight fit
- Good electrical insulation
- Vibration, abrasion and corrosion resistant



### SLOTTED CHEESE HEAD SCREWS

- Durable natural nylon
- Standard ISO 1207 and NF E 25 purposes only



### WASHERS

- Insulates against moisture and electricity
- Resists corrosion and abrasion
- Provides full insulation, cushioning and spacing
- Durable natural nylon



### HEX NUTS

- Wide range
- Black, natural or transparent
- Natural Nylon 6.6, Polypropylene or PVDF DIN Standard



### SNAP RIVET

- Easiest installation, push the head in and the grommet expands to hold it in place.
- Removable
- Available in both black and white
- Available in UL94 V-2, UL94 V-0 or Heat Stabilized material



### PEEK SOCKET HEAD SCREWS

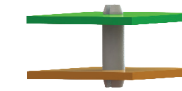
- These are socket head screw caps with a torx head. A in numerous sizes and made of PEEK material

## PCB HARDWARE

Our vast range is all about choice, whether it's a hex standoff for high-critical strength or PCB support with various locking methods.

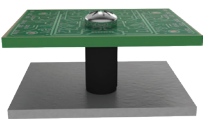
### MINI SUPPORT POST

- Securely anchors PCBs
- Nylon 6/6 for strength, ductility, and heat resistance



### HEX THREADED STANDOFF

- Secure circuit boards with high-torque locking and grounding features
- Extra strength and stiffness with 25% glass-filled nylon
- Black colour with Male and Female options



### CIRCUIT BOARD SUPPORT POSTS

- Fits into the circuit board to provide greater stability
- Easy fixing with various snap-in-fit options
- Available in two durable materials, nylon 6/6 or natural nylon



### HEX SPACERS

- Robust and secure with convenient screw-in design
- Male, Female and Undercut versions
- Available in three corrosion-resistant materials:
  - Nickel-plated brass
  - Zinc-plated steel
  - Stainless steel



### LOW VOLTAGE INSULATORS

- Durable natural nylon with brass insert
- Suitable for voltage breakdown >11,000 volts/mm
- Withstands harsh temperatures, from -40°C to +105°C
- Male, Female and Micro versions

## CASTORS



### SYNTHETIC NON MARKING RUBBER CASTORS

Grey or white Synthetic non marking Rubber Tyre, Zinc Plated Steel Housing.



### CASTOR WHEELS

- A full range of light to heavy duty castors suitable for use in a variety of medical equipment applications
- Plastic rubber tyre not resistant to contact with greases, oils or Chlorides.
- Good resistance to corrosion and rust, water and chemicals



### METAL-THREADED INSERTS

Use castors in conjunction with our Metal-Threaded Inserts.

## DON'T SEE WHAT YOU NEED HERE?

Ask us about different sizes, shapes, materials and finishes. Our Custom Solutions team will work to your specification. Find out more and contact us at [essentracomponents.com/medical-devices](https://essentracomponents.com/medical-devices)



## WHY ESSENTRA?

**FREE**  
SAMPLES

**FREE**  
CAD

**LOCAL**  
STOCK

**FAST**  
DESPATCH

**LOCAL**  
TEAM

**OVER**  
**45,000**  
PRODUCTS  
AVAILABLE

**ISO**  
ACCREDITED

## LET'S TALK

For more information and to contact your nearest Essentra office please visit [essentracomponents.com/medical-devices](https://essentracomponents.com/medical-devices) or email [medicaldevices@essentracomponents.com](mailto:medicaldevices@essentracomponents.com)